



# RICHMOND REDS

*Barbara Brackman*

**R**ichmond Reds reproduces the brick reds, pinks and chocolate browns of the nineteenth century, the stuff of everyday wardrobes, scrapbags and calico quilts. You'll find tossed blossoms, sprigs and floral trails, reproduced in the warm shades traditionally obtained from madder dyes. The collection is named for Richmond, Virginia, where historic brick buildings add similar color to the city's architectural heritage.



No. PS8300 Richmond Reds Size: 79" x 79"





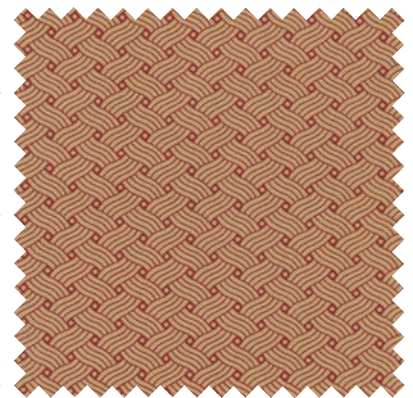
№ 8301 12\*  
Aged



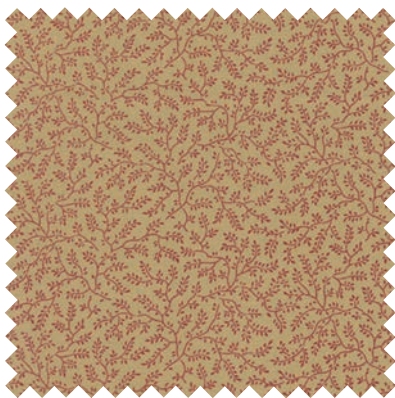
№ 8302 12\*  
Aged



№ 8303 13  
Aged



№ 8305 13  
Aged



№ 8306 13  
Aged



№ 8307 12  
Aged



№ 8300 16\*  
Bronze



№ 8305 18\*  
Bronze



№ 8307 18  
Bronze



№ 8300 18  
Copperplate Brown



№ 8303 20  
Chocolate Brown



№ 8300 19\*  
Chocolate Brown



№ 8303 19\*  
Copperplate Brown



№ 8306 20\*  
Chocolate Brown



№ 8300 19\*  
Chocolate Brown





№ 8305 19  
Copperplate Brown



№ 8306 19  
Copperplate Brown



№ 8305 17\*  
Mahogany Red



№ 8301 16  
Mahogany Red



№ 8302 16  
Mahogany Red



№ 8300 15\*  
Mahogany Red



№ 8303 17\*  
Mahogany Red



№ 8302 15  
Rebel Red



№ 8301 15  
Rebel Red



№ 8300 14\*  
Rebel Red



№ 8304 17  
Mahogany Red



№ 8304 14  
Rebel Red

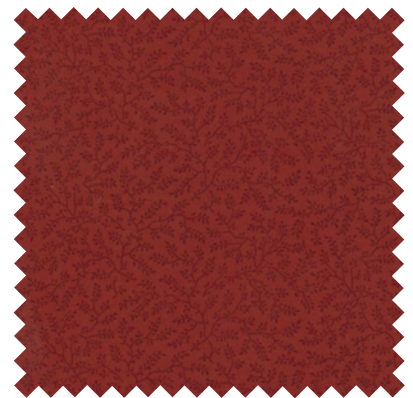




**No 8305 16\***  
**Rebel Red**



**No 8303 16\***  
**Rebel Red**



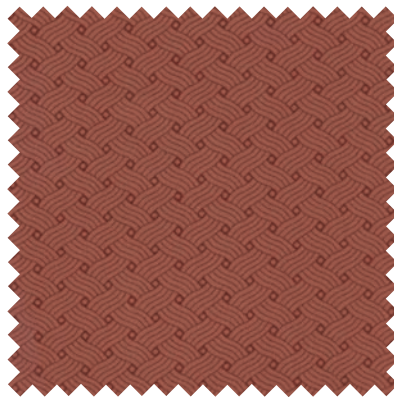
**No 8306 15\***  
**Rebel Red**



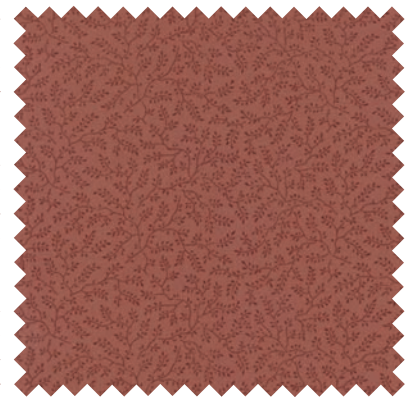
**No 8307 15**  
**Rebel Red**



**No 8304 16**  
**Rebel Red Aged**



**No 8305 14\***  
**Rosy Pink**



**No 8306 14**  
**Rosy Pink**



**No 8300 11\***  
**Shirting Cream**



**No 8303 11\***  
**Shirting Cream**



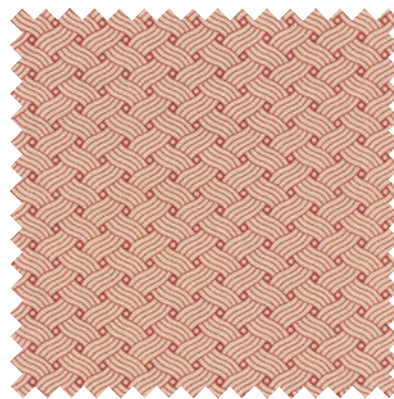
**No 8305 15**  
**Tonal Rebel Red**



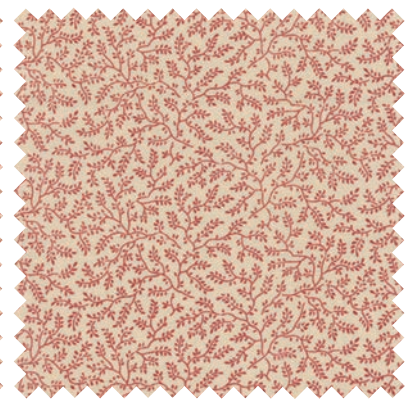
**No 8301 11**  
**Shirting Cream**



**No 8304 11\***  
**Shirting Cream**



**No 8305 11\***  
**Shirting Cream**



**No 8306 11\***  
**Shirting Cream**

**8300**

Asst.  
15

Asst.  
10

Low Cal  
20

AB

JR

LC

MC

PP

PS

• 100% Premium Cotton

• 40 Prints

*Delivery: September, 2014*