



Joie de Vivre

**French
General**

Joie de Vivre is a soft and subtle interpretation of early 19th century French prints and is evocative of an old French parlor room or a lady's dressing room. The larger multi-colored floral prints lend themselves to floral fussy cutting - a wonderful way to create pretty appliqués and hexagons. Out of all of the collections we have done in the past fifteen years with Moda, this is our very favorite and it will blend perfectly with our past collections. Our new Joie de Vivre Broderie Panel is printed in red or natural on a blend of cotton and linen - a beautiful easy base to stitch on. Cut these blocks out and make up a sweet baby quilt or a larger quilt using a Joie de Vivre Jelly Roll.

moda **SEPTEMBER DELIVERY**



Joie de Vivre

French
General



13980 11*



13987 11*



13986 11*



13982 11*



13981 11*



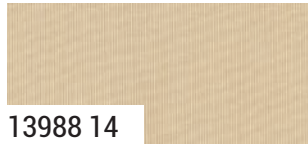
13983 11*



13983 12*



13529 21



13988 14



13981 12



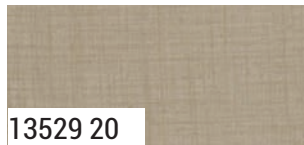
13986 12*



13985 11



13980 14*



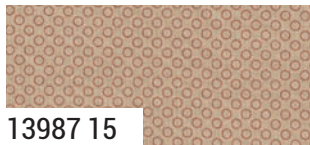
13529 20



13985 14



13982 15*



13987 15



13986 15



13981 15

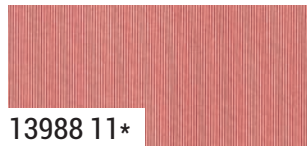
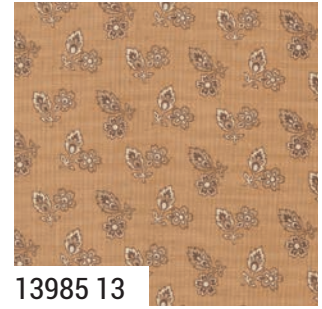
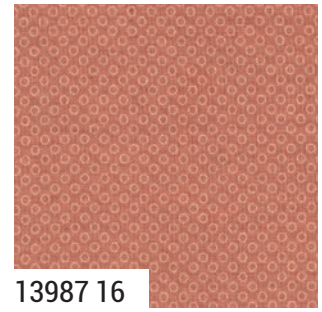
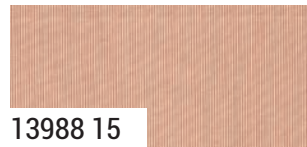


13983 16

moda SEPTEMBER DELIVERY

Joie de Vivre

French
General



moda SEPTEMBER DELIVERY

Joie de Vivre

French
General



13989 11L

Broderie Panel Size: 24" x 44"
Block Size: 6.25" x 6.25"



13989 12L

13980

Asst.
15

Asst.
10

Low Cal
10

AB

F8

JR

LC

MC

PP

KIT

SEPTEMBER DELIVERY

•40 Prints •100% Premium Cotton •2 Broderie Panels •70% Cotton / 30% Linen
AB includes all 40 skus. Assortments and precuts do not include broderie panels.



FG JV001 Le Jardin Rouge
66" x 66" by French General



FG JV002 Champs de Fleurs
78" x 78" by French General



FG JV004 Broderie 74" x 74"
JR Friendly by French General



FG JV003 Dans La Soiree
84" x 84" by French General



CKQ 2414 Wishy Washi 64" x 80"
by Copper Kettle Quilt Company

Kit
13980