

# botanica



Life is Art. Live it in Color.

Botanica is colorful and tranquil place where you can experience nature singing and dancing. The vibrant floral prints paired with textured designs express the rhythm and beat of a garden in bloom.

Bring life to your home through decoration or sway in a dress made of soft rayon. The joy of Botanica can be experienced in many ways. Join the celebration.



GERANIUM



Botanica - 11840 14



Monet - 11843 13



Little Jeanie - 11845 14



Daydream - 11844 13



Botanica - 11840 12



Bijou - 11841 11



Monet - 11843 11



Little Jeanie - 11845 11



Daydream - 11844 11



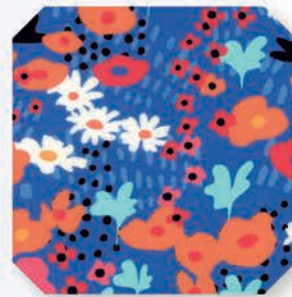
Mariposa - 11842 11



Mariposa - 11842 13



Little Jeanie - 11845 18



Bijou - 11841 14



Monet - 11843 15



Monet - 11843 18

STEEL



Mariposa - 11842 15

BLACK



Monet - 11843 17

PORCELAIN

ROYAL

CHEDDAR

# DESIGNER TRIVIA



First Fabric Collection  
**WILD NECTAR**

[crystalmanningsart.com](http://crystalmanningsart.com)



## CRYSTAL MANNING

**First collection** – Wild Nectar in 2017

**Favorite Quilt Market memory** – My first Quilt Market was Fall 2016. It's where I met Cheryl for the first time and was introduced to the quilting industry - that was love at first sight! It was very overwhelming and exciting, both at the same time.

**Favorite pre-cut** – The Jelly Roll! They stretch my “designer brain” by making me think in strips.

**Years sewing and quilting** – I bought my first sewing machine in 2015 and began making clothes. They were terrible, but it was a great learning experience. My first quilt was a year later.

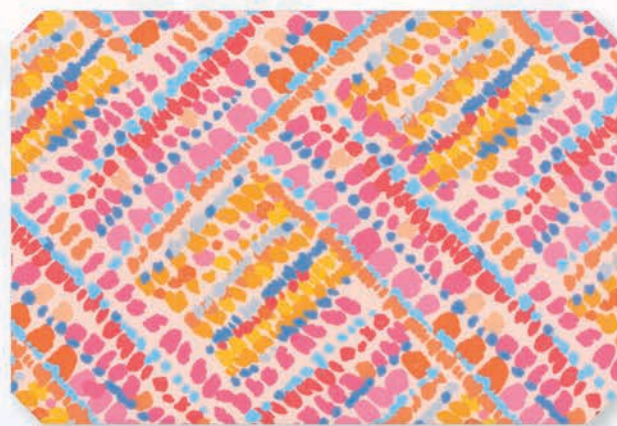
**Who taught you to sew** – I'm self-taught with the help of online videos and tutorials.

PEACH BLOSSOM



Mariposa - 11842 14

PINK



Daydream - 11844 12



Daydream - 11844 16



Little Jeanie - 11845 23



Mariposa - 11842 16



Monet - 11843 12



Botanica - 11840 16



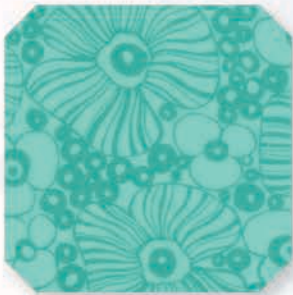
Bijou - 11841 13



Monet - 11843 14



Little Jeanie - 11845 17



Mariposa - 11842 19

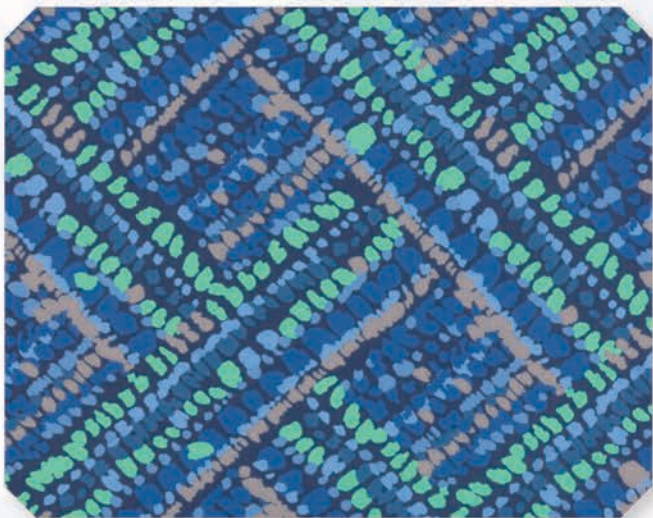


Monet - 11843 16

PEACOCK



Daydream - 11844 14



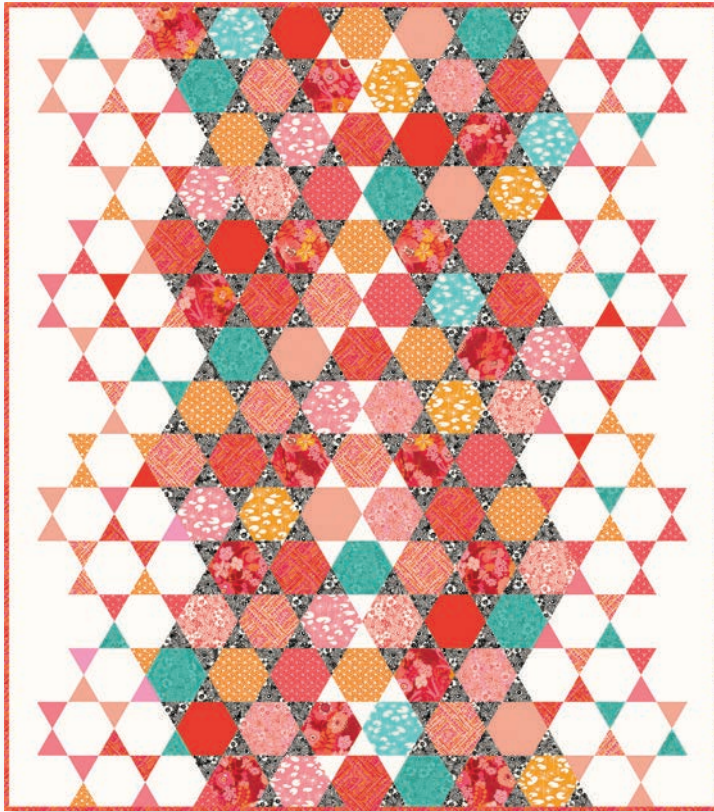
Daydream - 11844 15



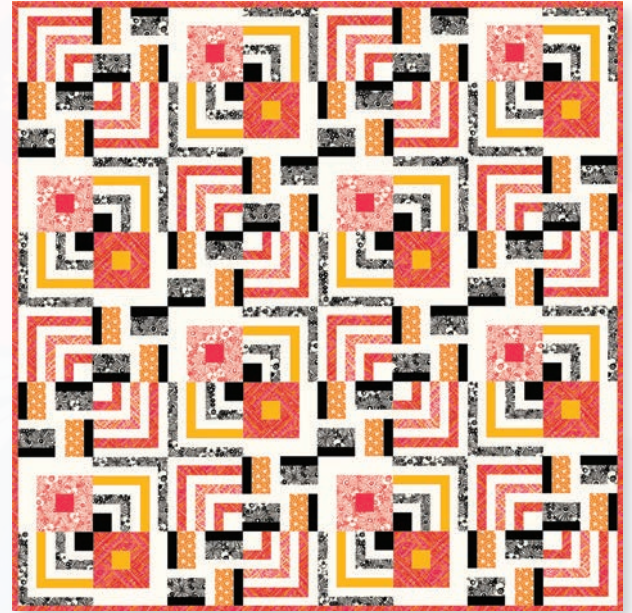
Botanica - 11840 15

BLUE

NAVY



CMA 866 / CMA 866G  
SERPENTINE - 96" x 105"



CMA 868 / CMA 868G  
TAXI RIDE - 64" x 64"



CC 12 / CC 12G  
CHARLIE CAFTAN PATTERN  
Sizes 0 to 20



CMA 867 / CMA 867G  
FLOWER BOX - 70" x 70"



Botanica - 11840 12R



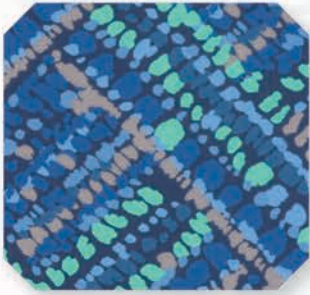
Botanica - 11840 14R



Mariposa - 11842 14R



Mariposa - 11842 15R



Daydream - 11844 15R



Daydream - 11844 16R



Botanica - 11840 15R



Bijou - 11841 14R

RAYONS

11840

Asst.  
15

Asst.  
8

OCTOBER DELIVERY

- 32 Prints
- 8 Prints

- 100% Premium Cotton
- 54" 100% Rayon