

Cameo image of Princess Charlotte of Wales and her fiance, Prince Leopold, from original quilt's border.



Collection for a Cause *Love*

Howard Marcus



No KIT46160 and PS46160 Collection for a Cause Love Size: 61" x 69"

Giving Back



Howard Marcus Dunn

Supporting the Cause

St. Jude's Children's Research Hospital

The mission of St. Jude Children's Research Hospital is to advance cures, and means of prevention, for pediatric catastrophic diseases through research and treatment. No child is denied treatment based on race, religion or a family's ability to pay.

moda **KIT**

13th in a Series



**No 46165 13G
Buttercup Cream**



**No 46171 15G
Buttercup**



**No 46161 15*
Buttercup**



**No 46166 20*
Buttercup**



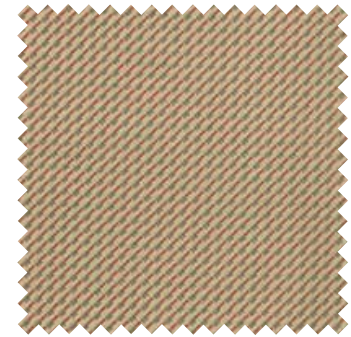
**No 46168 17*
Buttercup**



**No 46161 11*
Cream**



**No 46166 11
Cream**



**No 46167 11G
Cream**



**No 46164 11G*
Cream**



**No 46168 11*
Cream**



**No 46160 11
Cream**



**No 46170 11
Cream**



**No 46171 11G*
Cream**



Love

This beautiful quilt from the Howard Marcus Collection is from Virginia. It is believed to have been made by Anner Patrick Bousseau. The fabrics featured in the quilt are from 1825 to 1840. The quilt was passed down through her descendents.

There are over 1700 – 3" clamshell segments, plus partial clamshells in the quilt. The dress and home decor fabrics used, all prints, range from dark browns to medium browns, gold, double pink, indigo, Prussian blue. All were set with tan solid clamshells. The border is a golden brown toile or possibly chintz faded to beige that has regular ovals featuring the head and shoulders of a courting couple. She holds a rose and he, in uniform, offers a ring.

ABOUT THE BORDER ORIGINAL BORDER FABRIC

The image in the original border fabric, a faded golden brown toile or possibly chintz, featured the image of Princess Charlotte of Wales and her fiance, Prince Leopold of Saxe-Coburg-Saalfeld. This couple was the Prince William and Kate of early 19th century England. The fabric, suggesting their engagement, was printed in late 1815 or early 1816. The Winterthur Museum has a matching piece printed in indigo.

The couple's marriage on May 2, 1816 was a time of great celebration in London. Princess Charlotte soon became pregnant. Betting shops quickly set up book on what sex the baby would be. In November 1817 after a long and difficult labor the Princess gave birth to a stillborn son. In the hours following the delivery, 21 year old Princess Charlotte became ill and died. All of Great Britain and the United Kingdom went into deep mourning. Linen drapers ran out of black cloth and businesses selling bright fabrics and colored ribbons petitioned Parliament to have the mourning period shortened, lest they go into bankruptcy.

We have reproduced a smaller quilt, as the original quilt is 96" x 115", carefully matching the colors and prints in the antique quilt. We also chose to replace the outer border with a golden brown floral print. A machine piecing method was developed to construct this quilt. The original clamshells were made using the English paper piecing method.

The **Kit** for this quilt includes over 600 laser cut pieces to make the clamshells as well as border and binding fabric. While this is not a beginner quilt the laser cut pieces make construction much simpler and faster.



1



9



4



6



12



8

Collection for a Cause

is an ongoing program begun by Howard Marcus Dunn, owner of Moda Fabrics. It features antique quilts from his private collection and supports charities and causes that touch the hearts and lives of all of us. Listed below are the Collections and Causes which have been supported in the past...



- 1 HERITAGE COLLECTION**
Gilda's House
- 2 TRADITION COLLECTION**
UNICEF
- 3 LEGACY COLLECTION**
Juvenile Diabetes
- 4 ALLIANCE COLLECTION**
The Alliance for American Quilts
- 5 CHARITY COLLECTION**
The Alzheimers Association
- 6 HOPE COLLECTION**
The ALS Association
- 7 FAITH COLLECTION**
The Coalition to Salute America's Heroes
- 8 COMFORT COLLECTION**
*The American Red Cross for Japan
Earthquake and Pacific Tsunami Relief*
- 9 FRIENDSHIP COLLECTION**
Feeding America
- 10 WARMTH COLLECTION**
Habitat for Humanity
- 11 MILL BOOK 1835 COLLECTION**
The American Quilt Study Group
- 12 HISTORICAL BLENDERS COLLECTION**
4-H Clubs of America



ISE 508
ISE 508G
Williams Crossing
Size: 42"x 54"



№ 46169 12G
Cream Brown



№ 46162 11
Cream Brown



№ 46164 21G*
Soft Blue



№ 46162 15
Tan Brown



№ 46168 20
Antique Tan



№ 46171 12G
Walnut Brown



№ 46161 13*
Soft Blue



DLL 26 or DLL 26G *Timeless* Size: 75"x 91"



№ 46160 13*
Soft Blue



№ 46165 14G*
Brown Red



№ 46163 13
Blues
№ 46163 13Q



№ 46170 16
Navy



No 46169 11G
Cream Red



No 46162 17*
Tonal Tan



No 46166 22
Antique Tan



6" Patchwork Print

No 46163 12
Antique Tan



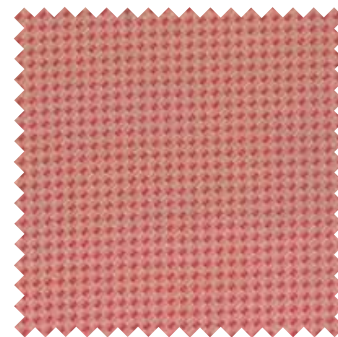
No 46168 14
Soft Blue



No 46160 16
Rose



No 46161 16*
Rose



No 46167 20*
Rose



No 46167 17G
Navy



No 46170 12*
Walnut Brown



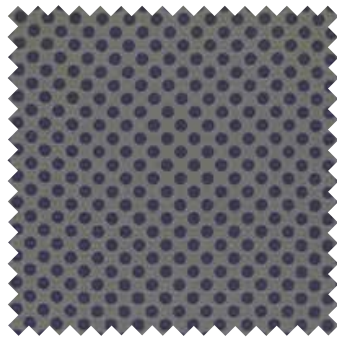
No 46166 13*
Walnut Brown



No 46160 12*
Walnut Brown



No 46161 14*
Navy



No 46165 17G
Blue Navy



No 46169 16G*
Navy Cream



6" Patchwork Print

No 46163 11*
Multi

46160

Asst. 15

Asst. 10

Low Cal 20

AB

JR

LC

MC

PP

PS

KIT

• 100% Premium Cotton

• 40 Prints • 1 Double Face Quilt

Delivery: September, 2013